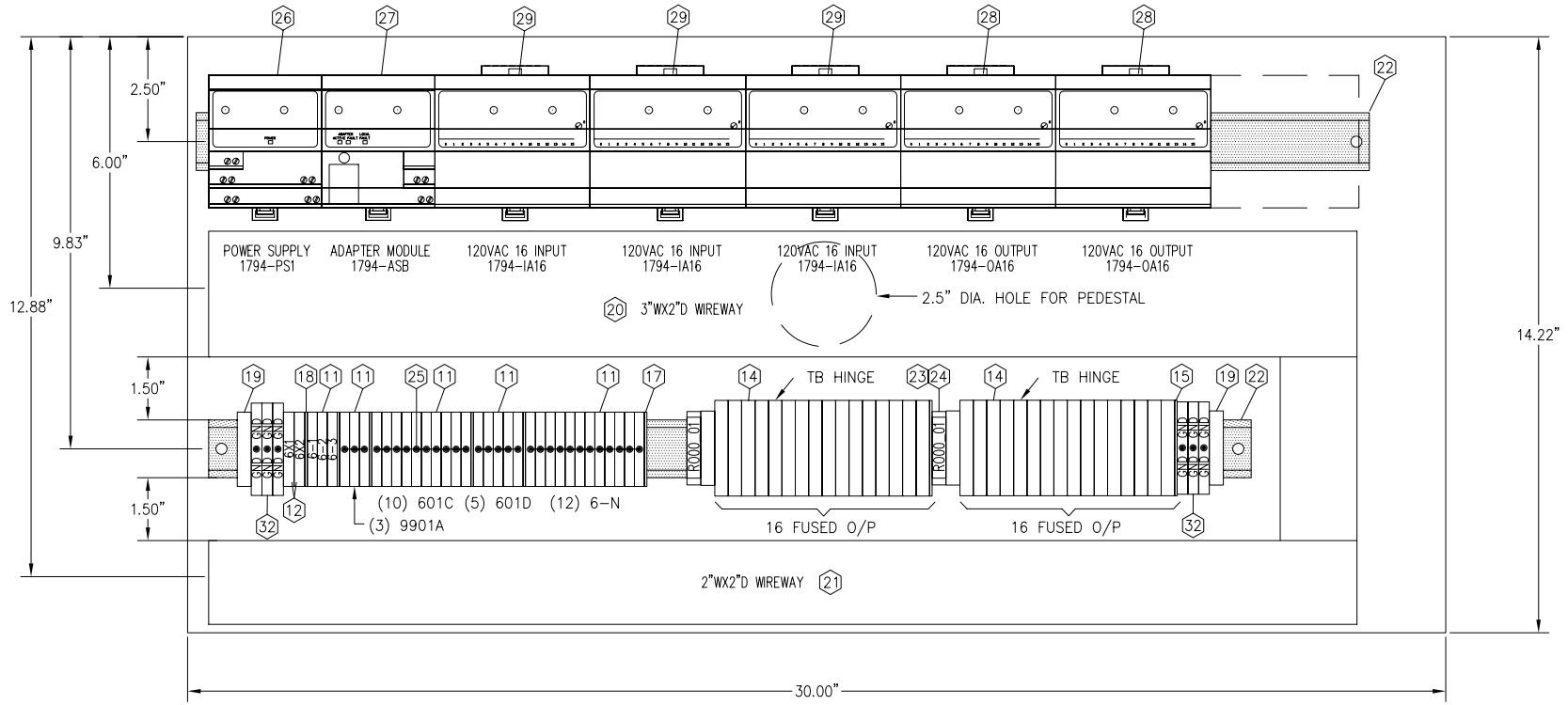
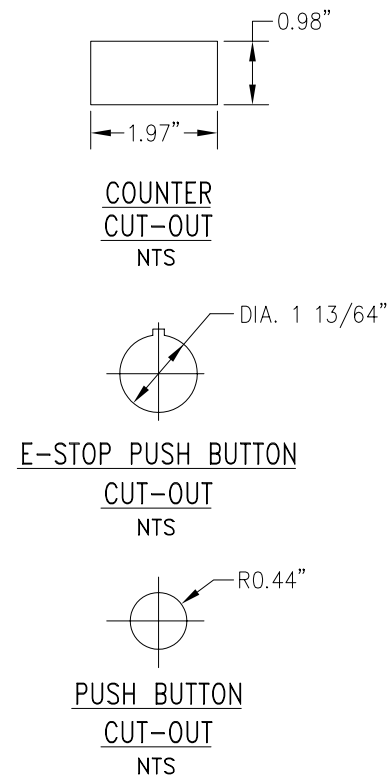
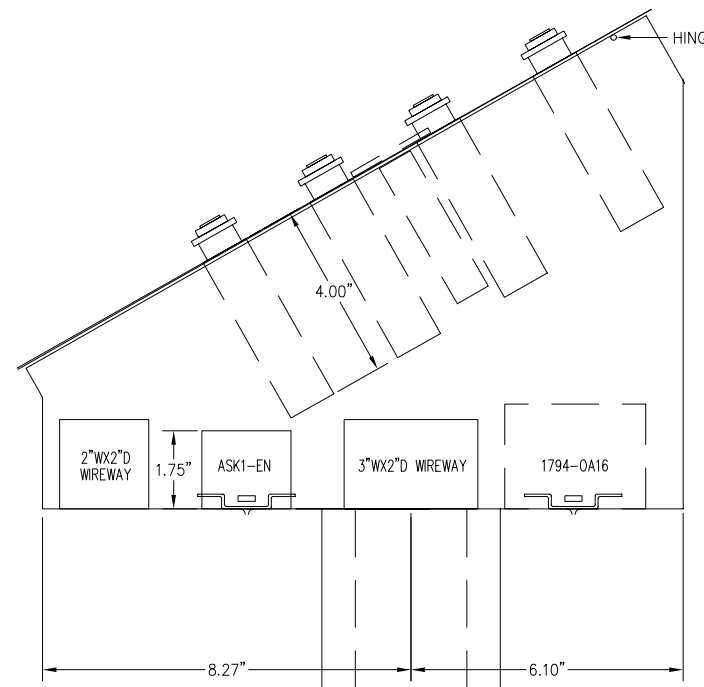


RACK 6 - CONSOLE C6 LAYOUT
NTS



CONSOLE C6 - INSIDE LAYOUT
NTS



CONSOLE C6 - END VIEW
NTS

MATERIAL LIST			
ITEM No.	QTY.	MODEL No.	DESCRIPTION
①	1	1488JQ11 1495C35 1495XN	HAMMOND 30"x16" CONSOLE C/W PEDESTAL & BASE
②	11	ZB4BW031 ZB4BK1233	TELEMECHANIQUE 2-POS. MAINTAINED GREEN ILL. P/B
③	7	XB4B021	TELEMECHANIQUE 2-POS. MAINTAINED NON-ILL. P/B
④	9	ZB4BW031 ZB4BK1263	TELEMECHANIQUE 2-POS. MAINTAINED BLUE ILL. P/B
⑤	1	ZB4BW031 ZB4BK1233 ZBE101	TELEMECHANIQUE 3-POS. MAINTAINED GREEN ILL. P/B
⑥	1	XB4BW3435	TELEMECHANIQUE RED ILL. P/B MOMENTARY
⑦	1	800T-FXP16RA7 800T-X64B	ALLEN-BRADLEY 3-POSITION ILL. PUSH-PULL UNIT
⑧	1	ZBY4H101	TELEMECHANIQUE FLUSH MTD WITH BEZEL LEGEND (30x40mm) C/W 8x27mm BLANK LEGEND
⑨	1		(2"x0.5") OR (2"x0.75") OR (1.5"x4.5") WHITE ON BLACK LAMACOID
⑩	1	-	WHITE BAKED ENAMEL PANEL FOR ITEM 1
⑪	33	SAK2.5EN	WEIDMULLER FEED THROUGH TERMINAL BLOCKS
⑫	2	SAK4EN	WEIDMULLER FEED THROUGH TERMINAL BLOCKS
⑬	0	910170	WEIDMULLER THERMAL MAGNETIC ONE-POLE, 3A, CIRCUIT BREAKER, TYPE 42-01
⑭	32	ASK1LD C/W 2A FUSE	FUSED TERMINAL BLOCKS WITH LED BLOWN FUSE INDICATION
⑮	2	AP	WEIDMULLER TERMINAL BLOCK END PLATE FOR ITEM 14
⑯	0	TW	WEIDMULLER TERMINAL BLOCKS PARTITION FOR ITEM 11
⑰	4	AP	WEIDMULLER TERMINAL BLOCK END PLATE FOR ITEM 11
⑱	1	AP	WEIDMULLER TERMINAL BLOCK END PLATE FOR ITEM 12
⑲	4	EW35	WEIDMULLER END BRACKET
⑳	6 ft	-	3" x 2" WIREWAY (GREY) C/W COVER
㉑	6 ft	-	2" x 2" WIREWAY (GREY) C/W COVER
㉒	2 ft	051451	WEIDMULLER SLOTTED STEEL MOUNTING RAIL TS 35 x 7.5
㉓	2	Scht5s	WEIDMULLER LABEL CARRIER FOR BACK TERMINAL BLOCK GROUP
㉔	2	STRS E505	WEIDMULLER LABELS AND PROTECTIVE STRIP FOR ITEM 15
㉕	As Req'd	-	WEIDMULLER JUMPER UNITS (Q3, Q5, Q10) AS REQUIRED
㉖	1	1794-PS1	POWER SUPPLY FOR FLEX I/O RACK
㉗	1	1794-ASB	ADAPTER MODULE
㉘	2	1794-OA16 1794-TBN	16-POINT ISOLATED OUTPUT CARD C/W BASE
㉙	3	1794-IA16 1794-TBN	16-POINT 120VAC INPUT CARD C/W BASE
㉚	200	-	TERMINAL BLOCK/CCT BREAKER MARKERS
㉛	1	G0-465-489.1	HECON COUNTER
㉜	6	EK 4/35	WEIDMULLER EARTH TERMINAL BLOCKS

- WIRE COLOR SCHEME:**
- 16 GAUGE CONTROL WIRE, TYPE TEW-105C SHALL BE USED FOR ALL CONTROL WIRING.
 - 12 GAUGE WIRE TYPE SHALL BE TEW-105C SHALL BE USED FOR ALL MAIN POWER WIRING.
 - THE COLOUR SCHEME FOR CONTROL AND POWER WIRING SHALL BE AS FOLLOWS:
 - INPUT CARDS: RED
 - OUTPUT CARDS: BLUE
 - ANALOG CARDS: BLACK (+), WHITE (-)
 - 120VAC: WHITE
 - NEUTRAL: GREEN
 - GROUND: PURPLE
 - (+)24VDC: GREEN
 - (-)24VDC: ORANGE

DATE	BY	DESCRIPTION	CHKD.
BAPR 2002	RJA	ISSUED FOR QUOTATION	

REVISIONS			
No.	DATE	DESCRIPTION	CHKD.

DWG. No.	TITLE
	CONSOLE C6 PHYSICAL LAYOUT

REFERENCE DRAWINGS			
BY	DATE	DESIGNED	DRAWN
		ES	RJA
		CHECKED	DATE
			13 MAR, 2002
		DESIGN	DRAWING
			SCALE
			NTS
		PROJECT MANAGER	SPECIFICATION No.
		ES	200142EP503
		PROJECT TECHNICIAN	
		RJA	

E&I ENGINEERING LTD.
Fredericton, NB

AREA NAME

CONSOLE C6
PHYSICAL LAYOUT

JOB No. 200142 CONSULTANT DWG. No. 200142-0730

E&I ENG. DWG. No. 2001-25E-0730